

ASI Update

Matt Cunningham



R&D update

- 2016-801 Future Oysters – “Enhancing Pacific Oyster breeding to optimise national benefit”
- Progress has been good
- Lab model improvements
- Translocation protocols SA to NSW
- Upgrades to IMAS facility
- IMAS scoping trials (viral loadings, ozonation)
- Commercial data collection
- SA family line production



Field trials summary – Old trials

YC	SITE	AGE (yr)	No. FAM	No. IND	SUR	h ²
2011	Georges R	0.3	43	7,740	0.49	0.34
	Georges R	1	43	10,320	0.20	0.46
2012	Georges R	1	54	12,960	0.27	0.40
2013	Georges R	1	80	14,400	0.13	0.50
	Pipeclay - BR	2.2	77	8,560	0.70	0.12
2014	Georges R	1	64	7,680	0.11	0.57
	Pittwater	1.3	76	18,507	0.63	0.12
	Pipeclay - BR	1.3	71	28,145	0.20	0.14



Field trials summary – Summer 2015/16

YC	SITE	AGE (yr)	No. FAM	No. IND	SUR	h ²
2015	Georges R	1	78	9,790	0.21	0.53
	Pittwater	1	73	11,670	0.50	0.55
	Pipeclay	1.1	78	11,630	0.30	0.47
2016	Pipeclay	0.2	40	14,130	0.23	0.10
	Pipeclay	0.2	36	12,630	0.12	0.09
	Combined	0.2	76	26,760	0.16	0.10

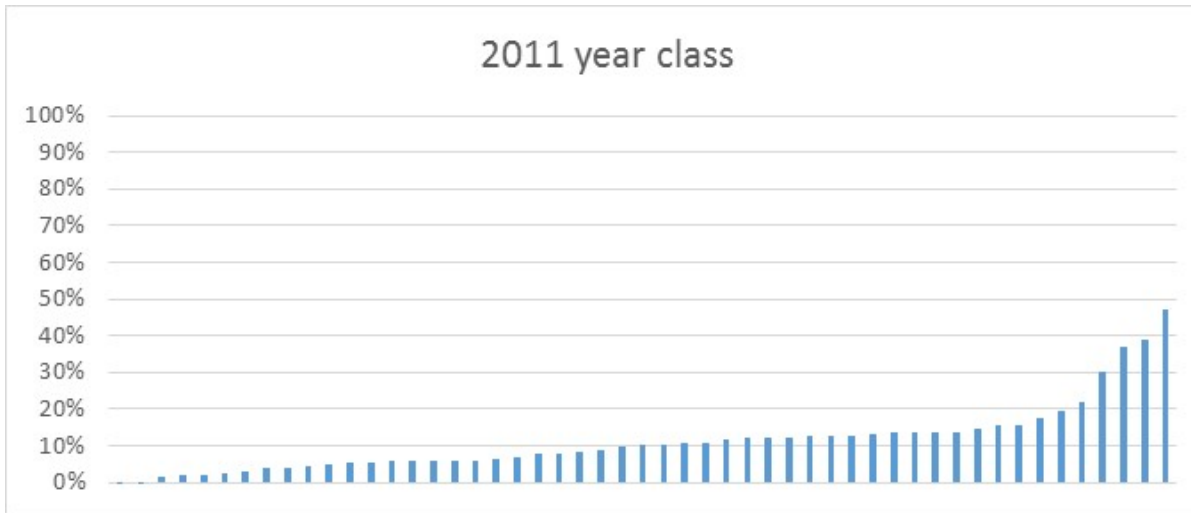


Field trials summary – Current total

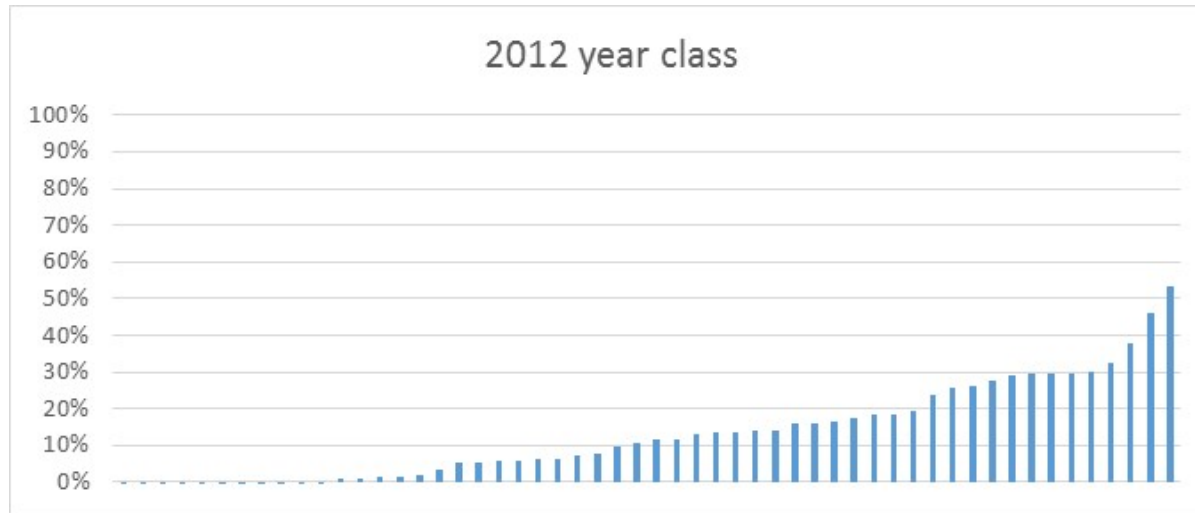
Number of year classes	6
Number of trials	13
Number of families	395
Number of spat (3 month age) challenged	34,500
Number of one year olds challenged	125,100
Combined heritability	0.35



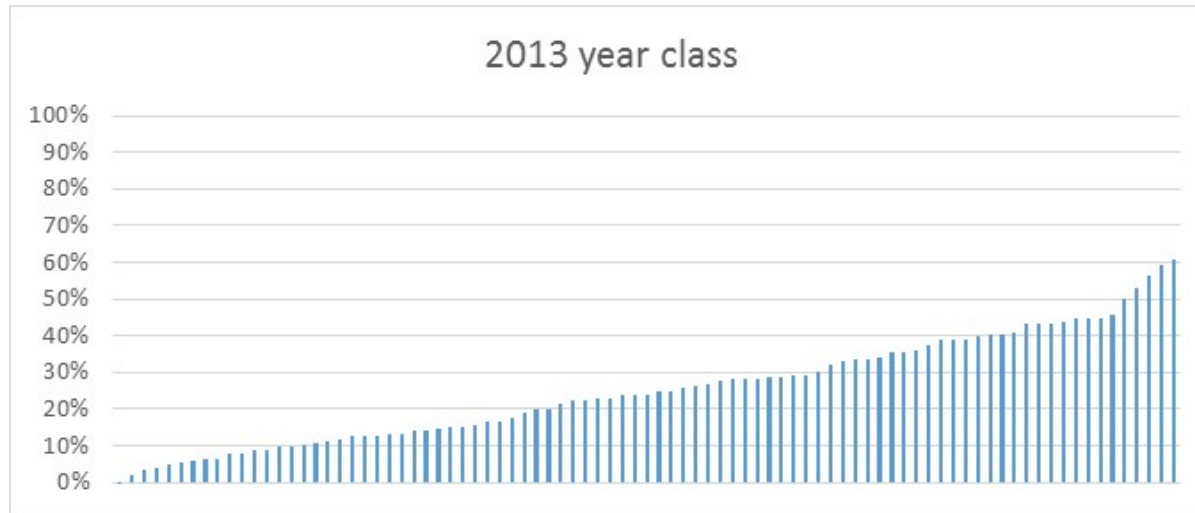
Family performance – field test



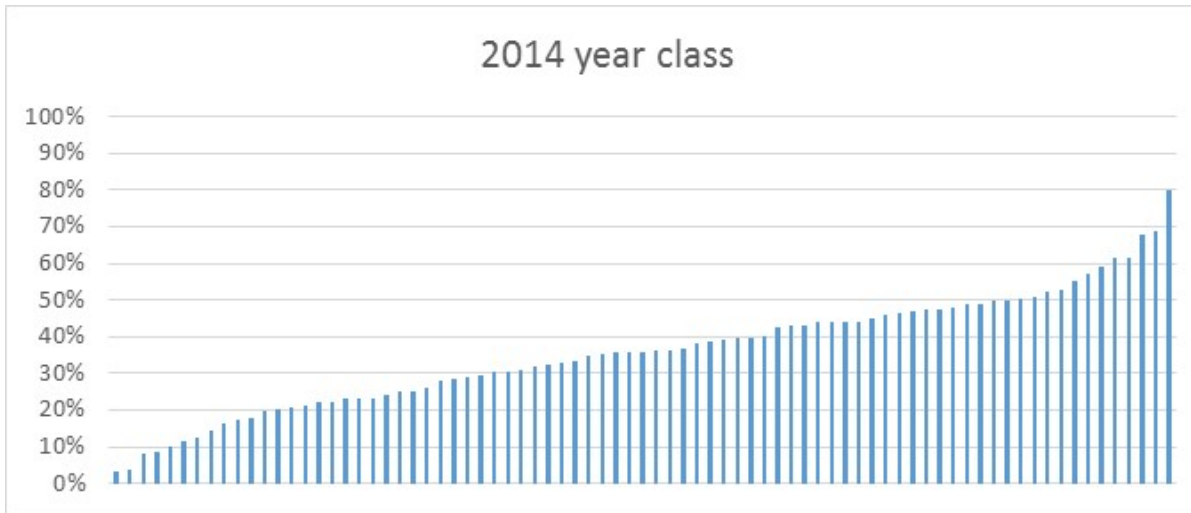
Family performance – field test



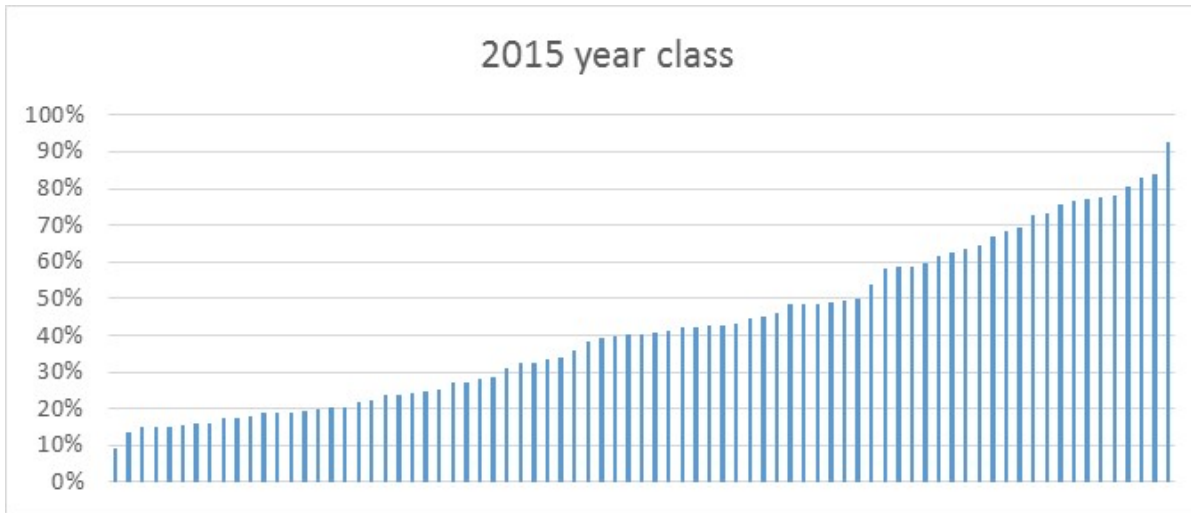
Family performance – field test



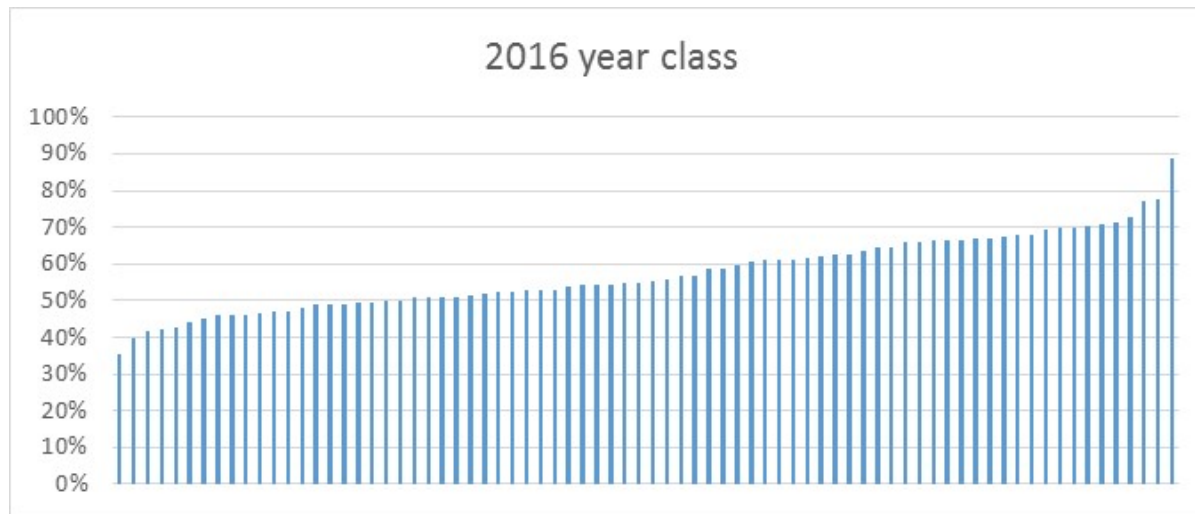
Family performance – field test



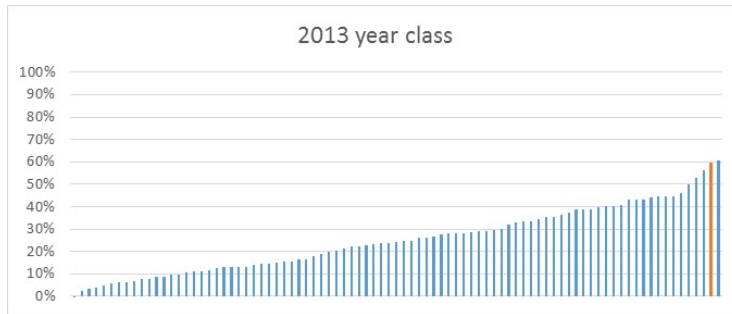
Family performance – field test



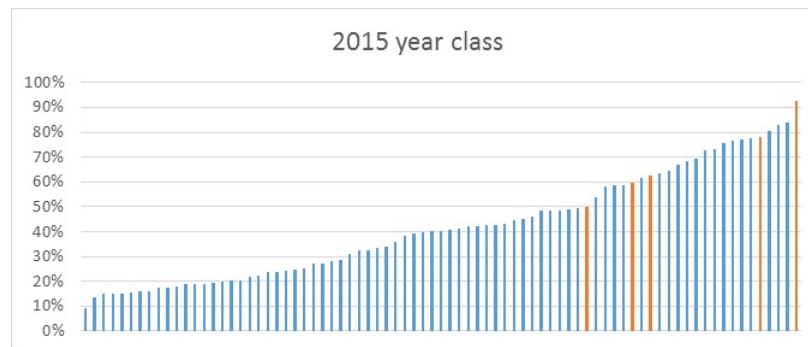
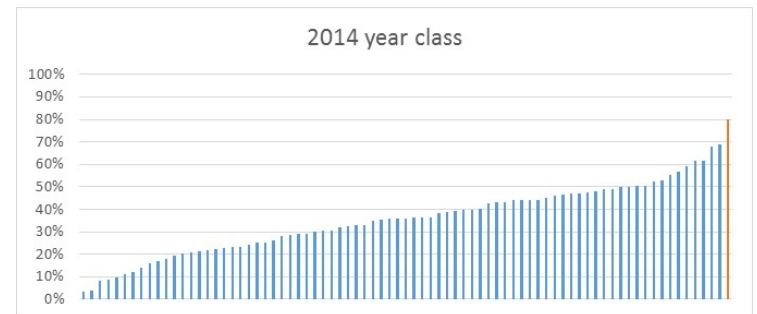
Family performance – field test



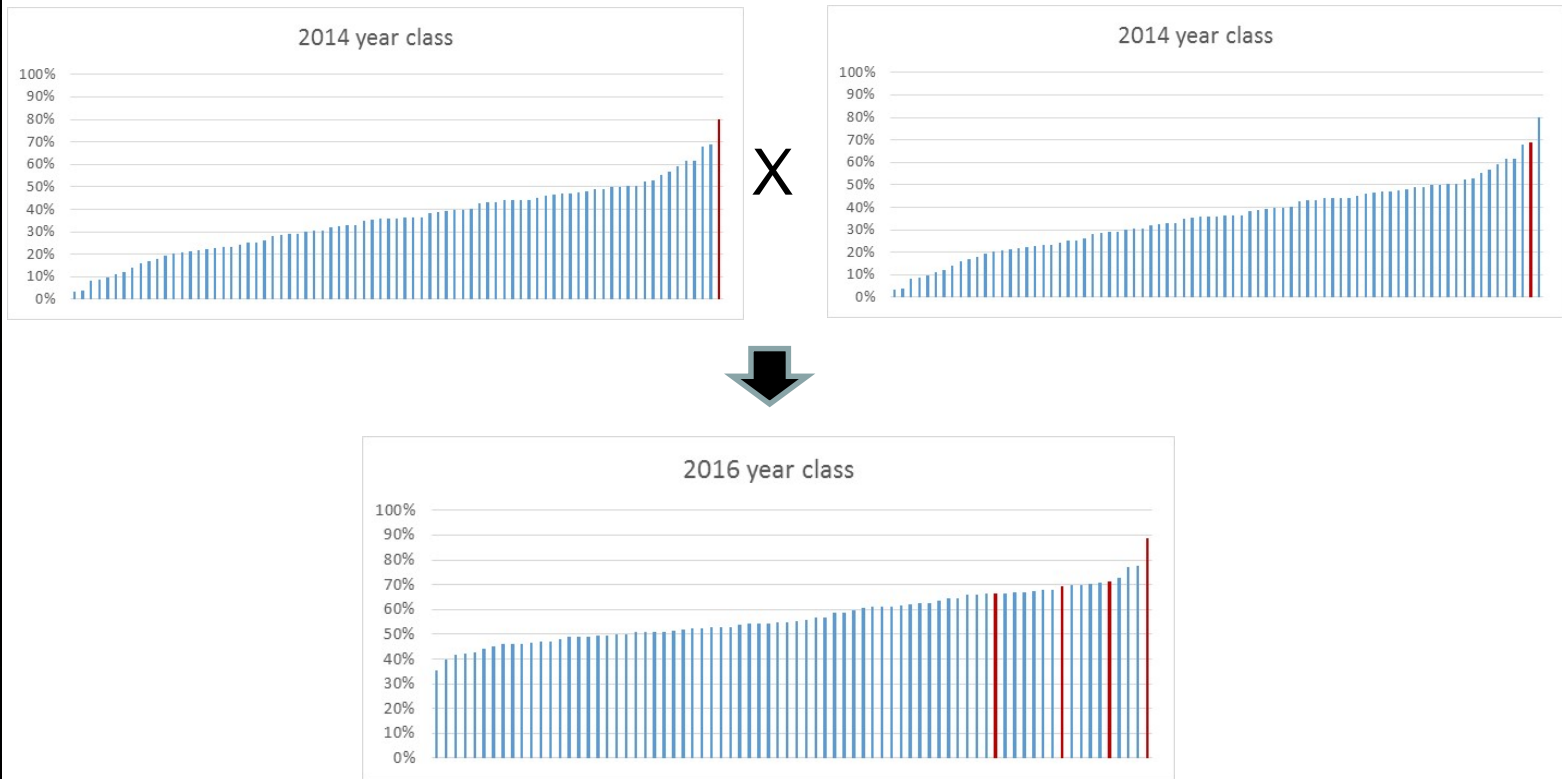
Variation within family crosses



X



Variation within family crosses





FAM_ID	SIRE_FAM	DAM_FAM	FAM_EBV	FAM_AC	SUR_EBV	SUR_AC
2015066	2014075	2013085	92%	0.66	96%	0.73
2015083	2014075	2013048	84%	0.65	88%	0.73
2015078	2014054	2013052	83%	0.65	88%	0.73
2015070	2014075	2013060	81%	0.67	86%	0.74
2015087	2014075	2013085	78%	0.66	84%	0.73
2015073	2014075	2013031	78%	0.66	82%	0.73
2015072	2014075	2013060	77%	0.67	83%	0.74
2015074	2014050	2013066	76%	0.66	82%	0.73
2015068	2014075	2013001	76%	0.66	83%	0.73
2015077	2014054	2013060	73%	0.66	80%	0.73
2015069	2014075	2013001	73%	0.66	80%	0.73

ACCC 3 year review

- ASI has written to shareholders
- ASI in conjunction with peak bodies to conduct review
- Determine if research goals being met
- Should the levy continue
- Scope of review still to be confirmed

